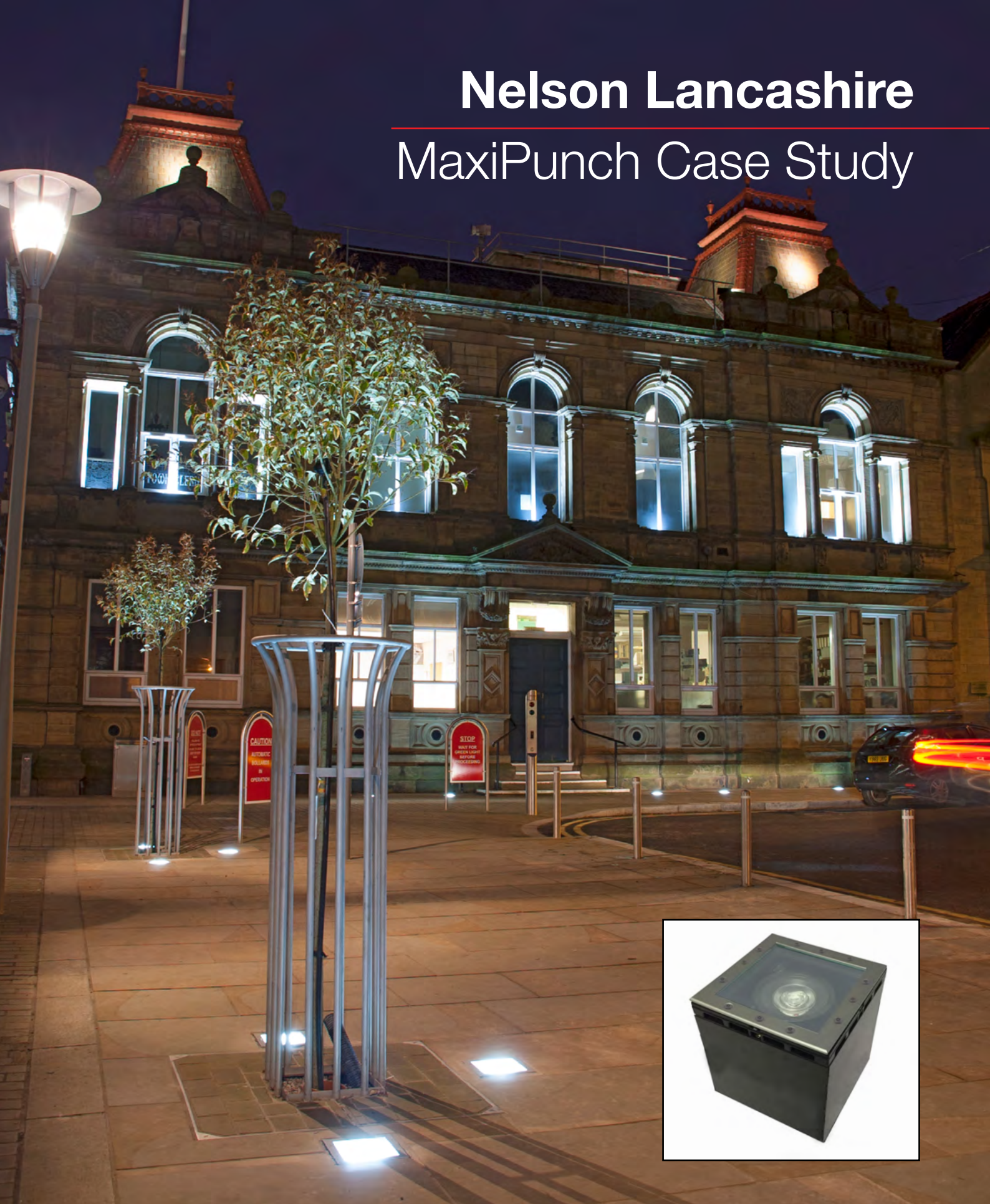


Nelson Lancashire

MaxiPunch Case Study

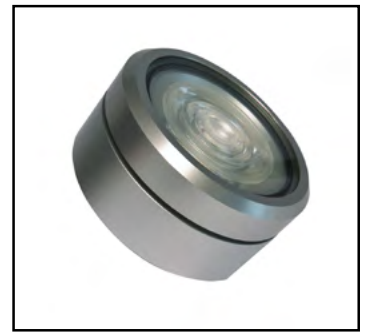


Information

Client: Pendle Borough Council

Location: Nelson, Lancashire

Products Used: MaxiPunch 4000K Bespoke Recessed



Company Background

MaxiLED was created based on a idea of simplifying what has been historically complicated LED installations, when controllability is required. Normally a controllable LED installation requires one set of cables for electricity and one set of cables for data (controlability) which is not only a added expense in installing, but also a great challenge when retrofitting old technology.

MaxiLED combines electricity and data in to a single set of wires, which lowers installation cost for our customers and greatly simplify retrofit instalations, when energy savings or dynamic solutions are desired. Using standard DMX as a protocol for control, means no restrictions in performance of the LED system, every luminaire in a MaxiLED system is individually addressable.

As a UK manufacturer MaxiLED prides itself on providing tried and tested products engineered with precision, but also with a strong focus on flexibility to create bespoke solutions. MaxiLED is a proven technology that is already represented internationally and have successful installations in USA, Middle East, South East Asia and Australia, we aim to make our international success a global success by combining new partnerships with our rapid development of more MaxiLED controlled luminaries and bespoke project solutions.

Background

Working alongside Pendle Borough Council to redevelop the Town Centre to ensure it remains a vibrant, attractive and welcoming place for the whole community with a strong mix of shopping and tourism attractions together with great places to live, work and relax.



Design

A bespoke retrofit project to replace inground white failed luminaries. Maxiled designed the MaxiPunch Inground to be an IP68 unit that delivered 800lms, CRI 90, to fit into the existing recessing box, the mounting plate to allow tilt, to utilise the existing electrical connections and be submersible. Installation now 2years old with over 110 units. The MaxiPunch is now a standard fitting in Recessed / Architectural and Landscape mounting options.



Global Distributors

Australia:

Light Project Pty Ltd.
T: +61 3 8415 1970
E: info@lightproject.com.au
W: www.lightproject.com.au

Ireland:

Fantasy Lights
T: +353 1 460 1052
M: +353 87 927 3566
E: sales@fantasylights.com
W: www.fantasylightsgroup.ie

MENA/GCC Region
(Including Turkey & Turkic Republics)
LITE Ltd.
M +44 (0) 7598 995730
E: timothyplumb@lite-ltd.co.uk
E: ian@lite-ltd.co.uk

Netherlands:

Q CAT Lighting
T: +31 (0) 10 415 18 11
E: info@qcat.nl
W: www.qcat.nl

New Zealand:

Energy Light Ltd.
T: +64 3 977 2034
E: customerservice@energylight.net
W: www.energylight.net

North America:

VLT
T: +1 949 581 9398
E: info@vltrcorp.com
W: www.vltrcorp.com

Singapore:

Technolite
T: +65 6453 1978
E: enquiry@technolite.com.sg
W: www.technolite.global

South Africa:

SSLI - Solid State Lighting
M: +27(0)82 785 3890
E: ross_blakeway@ssli.com
W: www.ssli.co.za

Sweden:

Sweden Stockholm Lighting
T: +46 721 470 087
SMS: +46 709 909 110
E: oscar@stockholmlighting.se

United Kingdom:

LITE Ltd.
D: +44 (0)1592 757 202
M +44 (0)7866 724625
E: ian@lite-ltd.co.uk
W: www.lite-ltd.co.uk

MaxiLED
Lighting

Unit 2, Farrington Place, Rossendale Road Ind. Est. Burnley, Lancashire. UK. BB11 5TY
T: 0845 8732 601 F: 0845 8732 602
E: sales@maxiledlighting.com Web: www.maxiledlighting.com